

ORDINATE

PhonePass

가

PhonePass Korea

ORDINATE

-

-

가

-

-

-

ORDINATE

PhonePass

가

ORDINATE

•

;

,

•

;

ORDINATE

• 가
,

⋮

‘

.

0.0

1.0

.

.

ORDINATE



‘

’



가

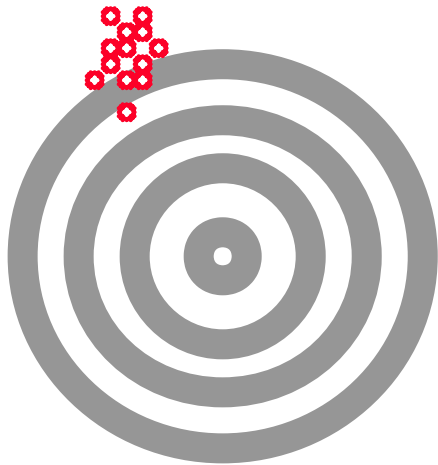
’

‘

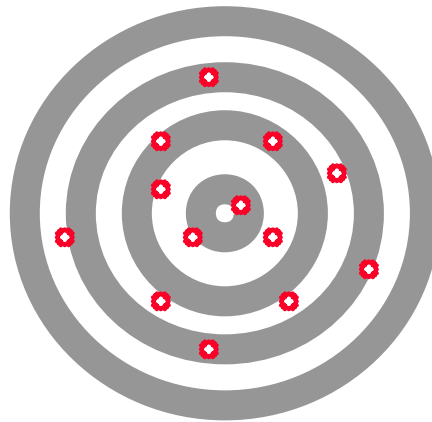
’



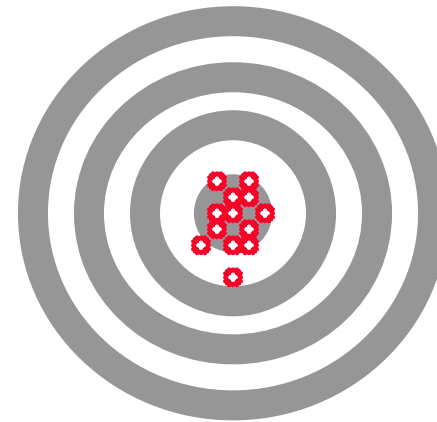
ORDINATE



,

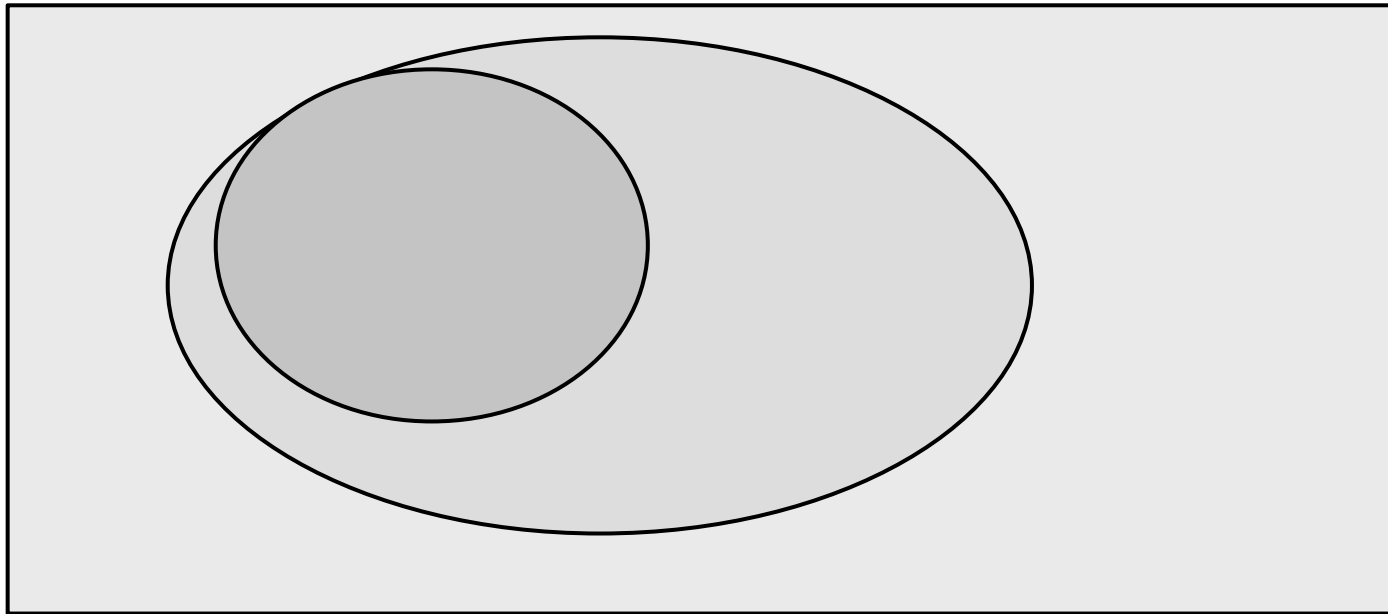


가



ORDINATE

-
-



ORDINATE

가

- 가

— : , , ,
— : , , , ,

- ()

—
— 가
—

ORDINATE

●

—

—

—

●

—

—

—

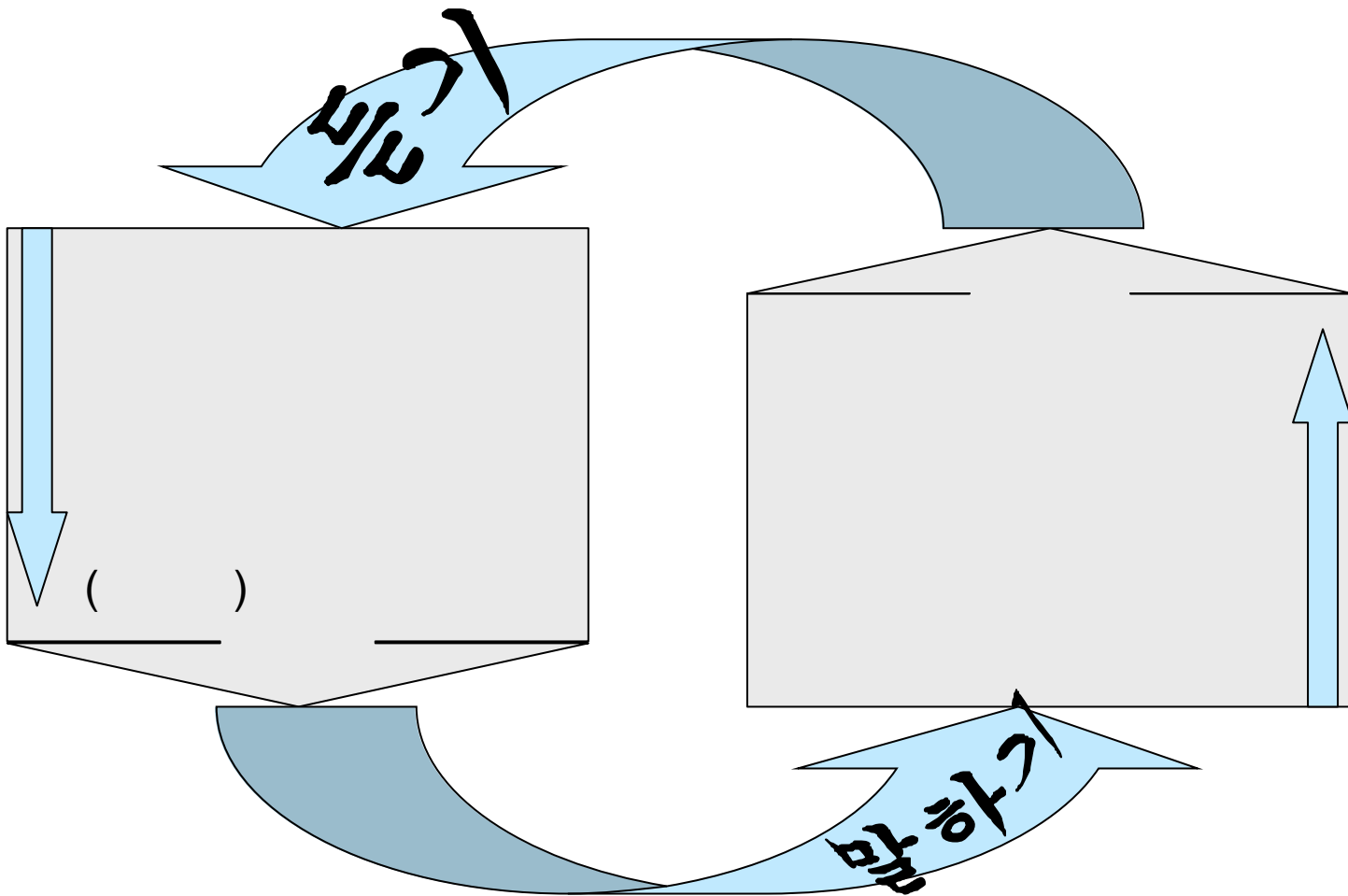
—

가 .

ORDINATE

()

ORDINATE



ORDINATE

PhonePass

_____:

- a.
- b.
- c.
- d.
- e.
- f.

— (가)

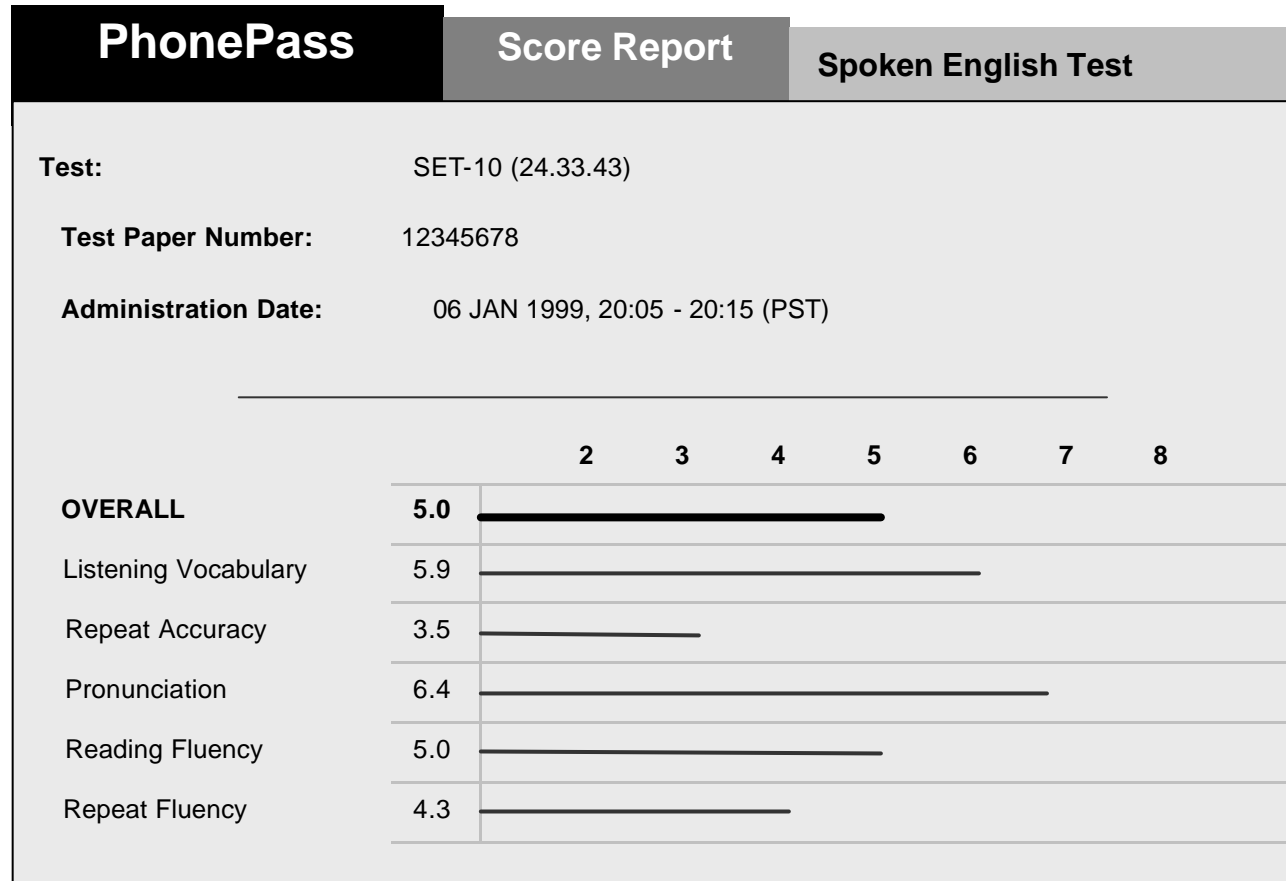
,

,

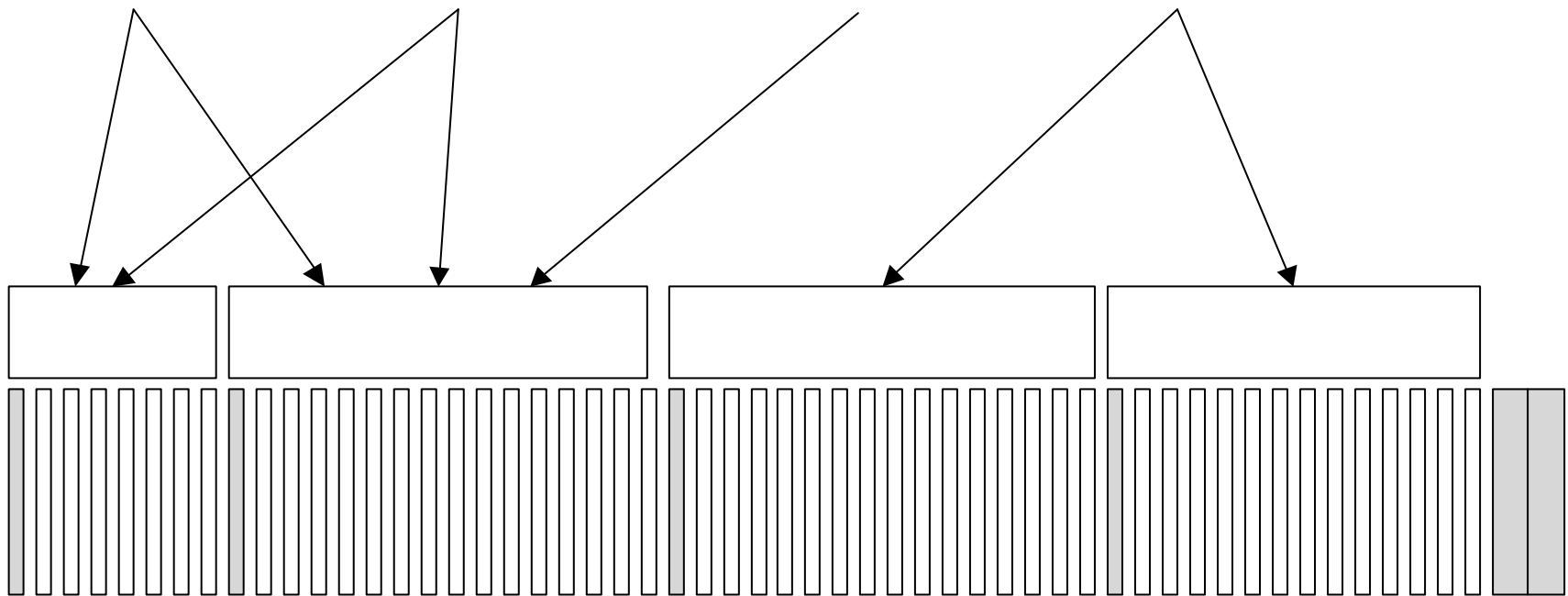
,

,

ORDINATE



ORDINATE



ORDINATE

가

30%

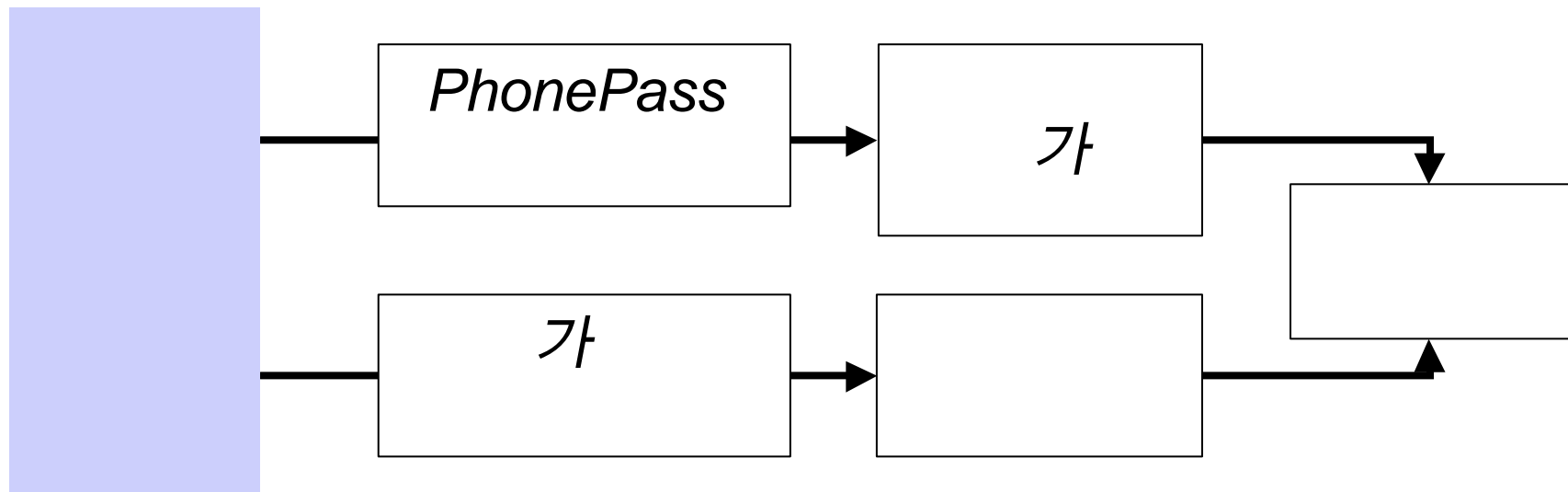
30%

20%

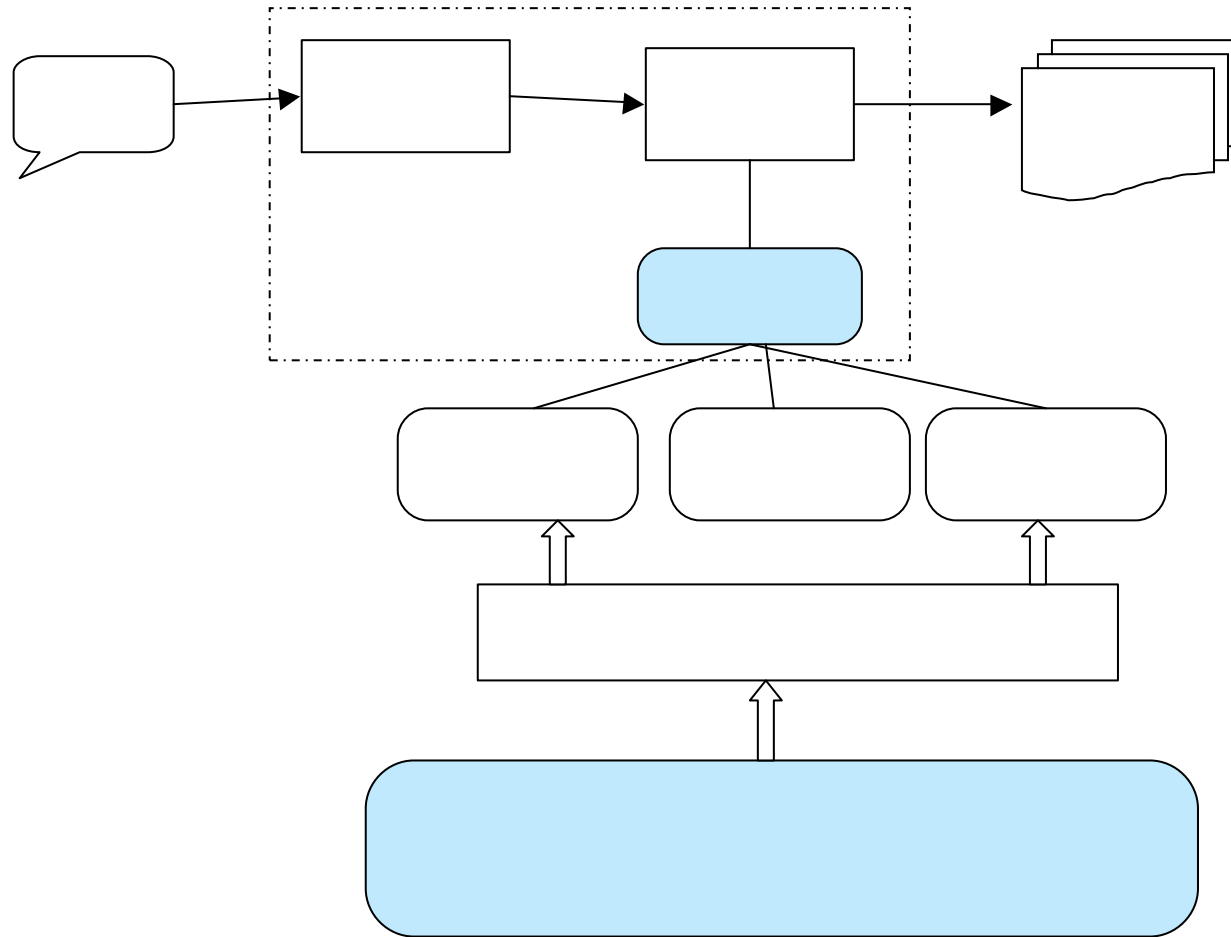
10%

10%

ORDINATE



ORDINATE



ORDINATE

400,000

247,000

123,000

> 100

ORDINATE

-

,

,

-

,

-

ASR

,

,

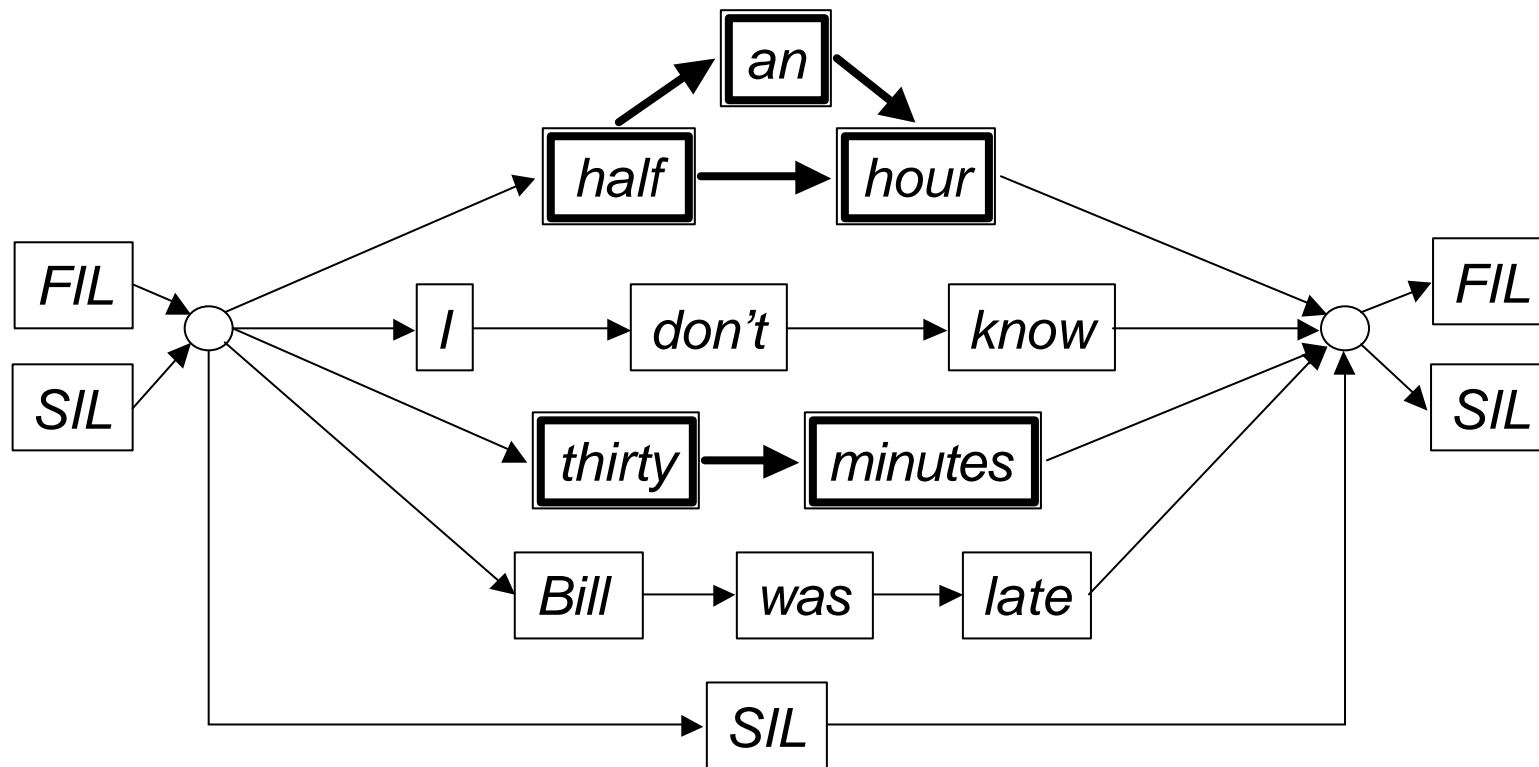
ORDINATE

()

5. _____ : C V
가 가
C . 가 ,
.

2. _____ :
33% 가 , C 가
가 , 가 .

ORDINATE



ORDINATE

?

가

가?

?

가

가

가?

?

가?

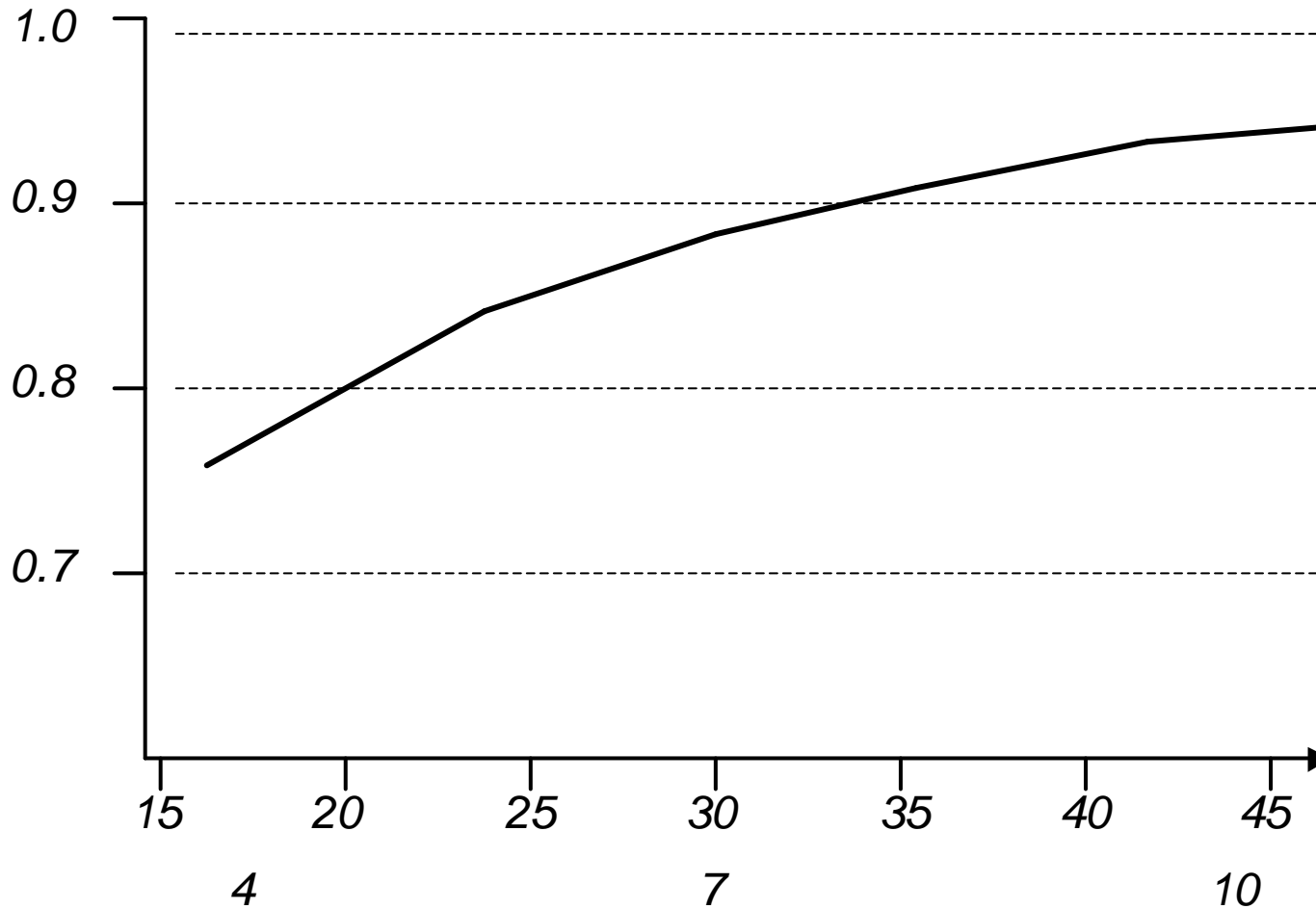
?

가

가?

ORDINATE

PhonePass

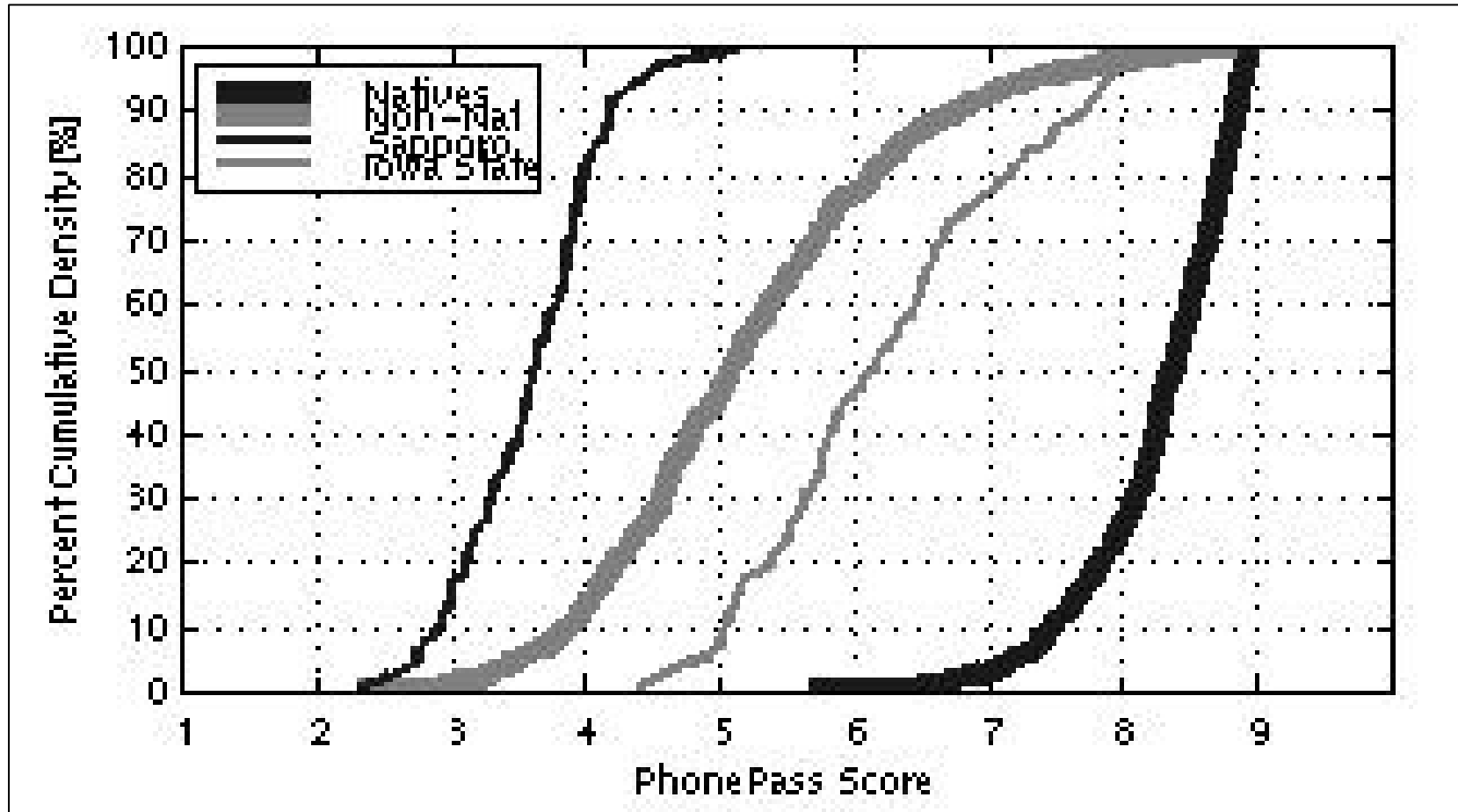


ORDINATE

PhonePass

_____	_____	_____
	0.94	0.94

	0.82	0.75
	0.92	0.85
	0.93	0.94
	0.86	0.92
	0.84	0.82
= 288	2	:: 5



ORDINATE

: , **SET-10**

0.94

0.89

0.89

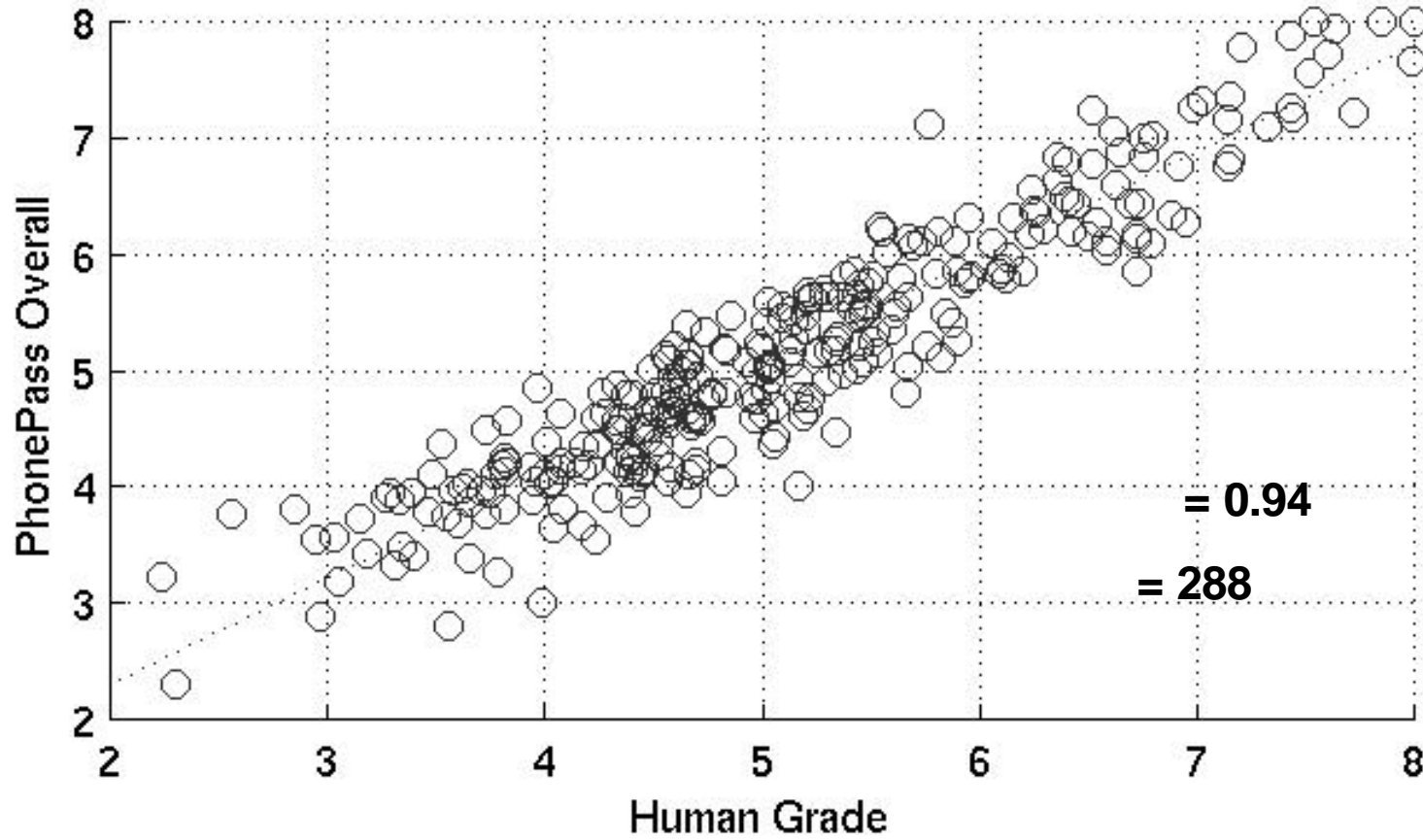
0.79

0.86

0.87

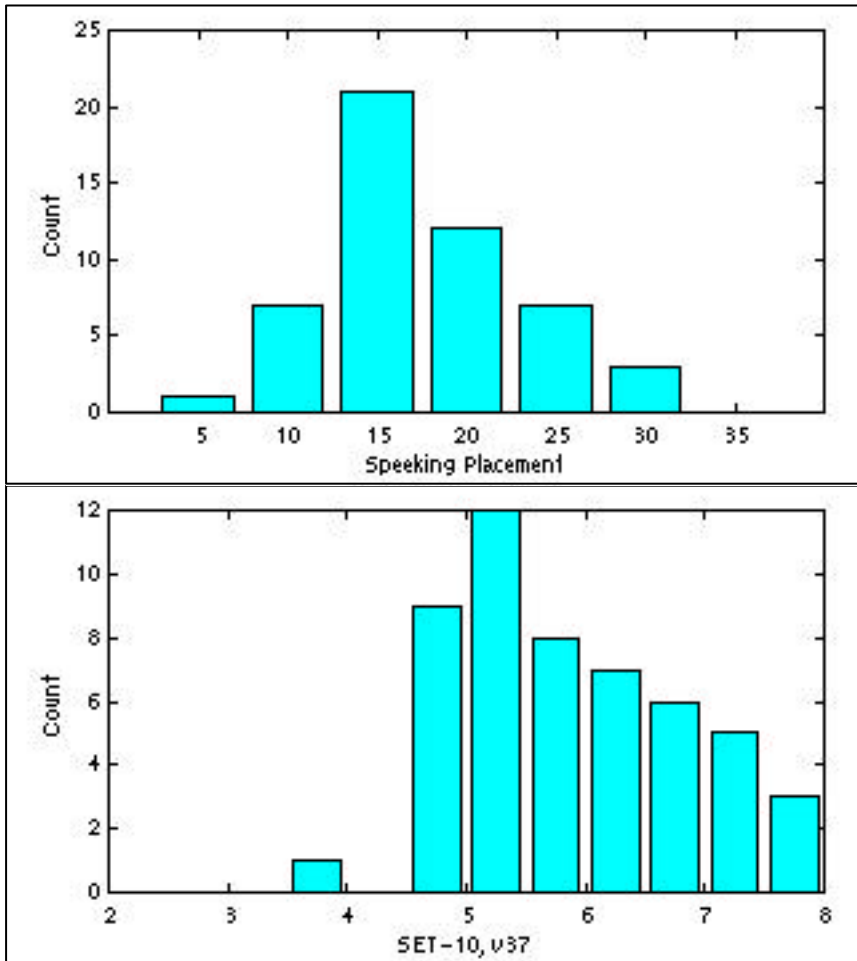
= 288

ORDINATE

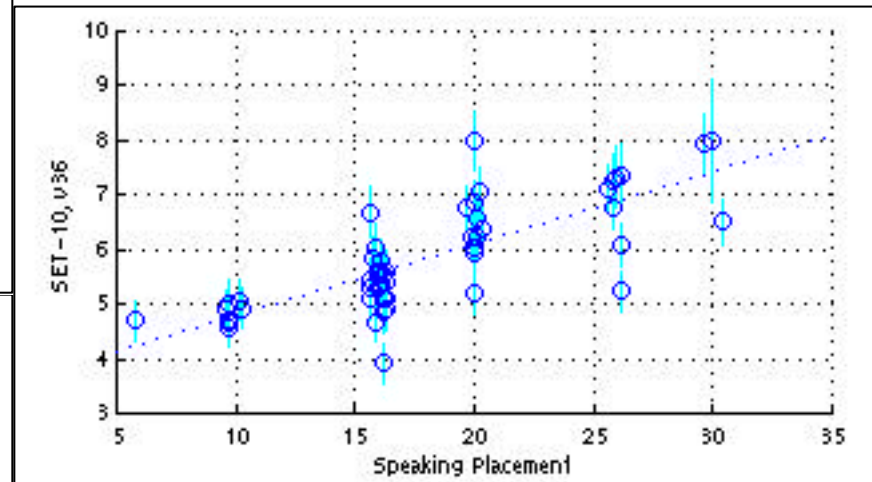


ORDINATE

DLI ILR



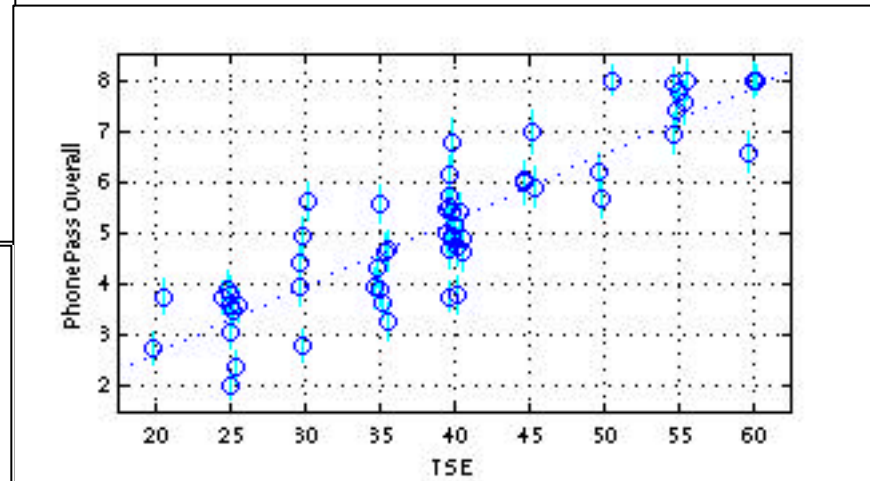
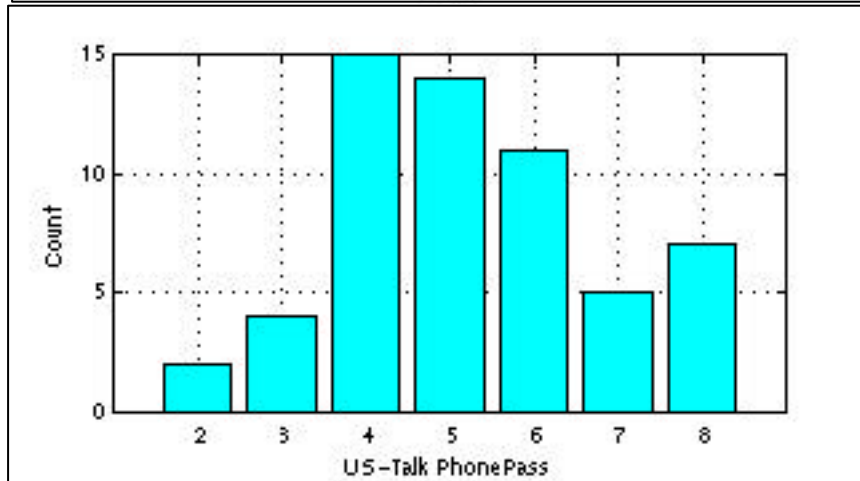
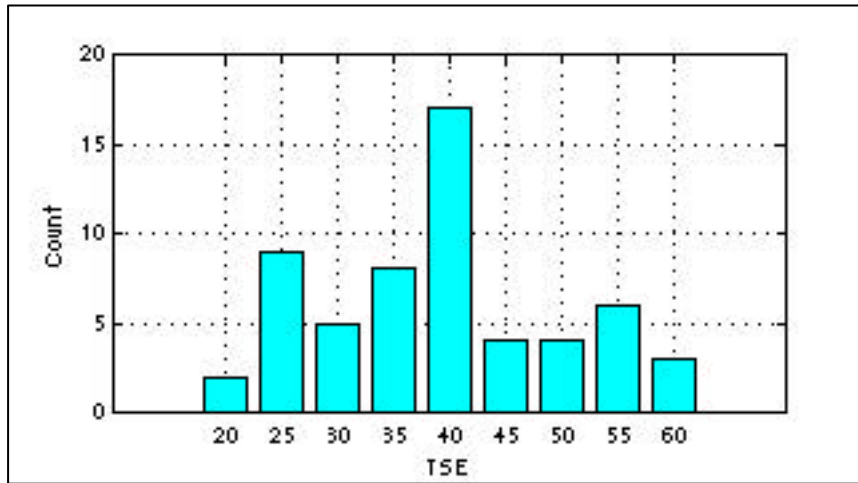
가 PhonePass



$$= 51$$
$$= 0.75$$

ORDINATE

TSE PhonePass



$$= 58$$
$$= 0.88$$

ORDINATE

PhonePass

가

TSE

0.89

0.88

58

ILR

가 0.75

0.75

51

ORDINATE

?

가 .

?

.

?

.

.

?

.

?

.

?

가

.

ORDINATE

(OPI)

- OPI
 - U.S. Gov't OPI
 - OPI
- 0.35 0.75

PhonePass

ORDINATE

- PhonePass
_____가
- SET-10
- SET-10

.

가

.